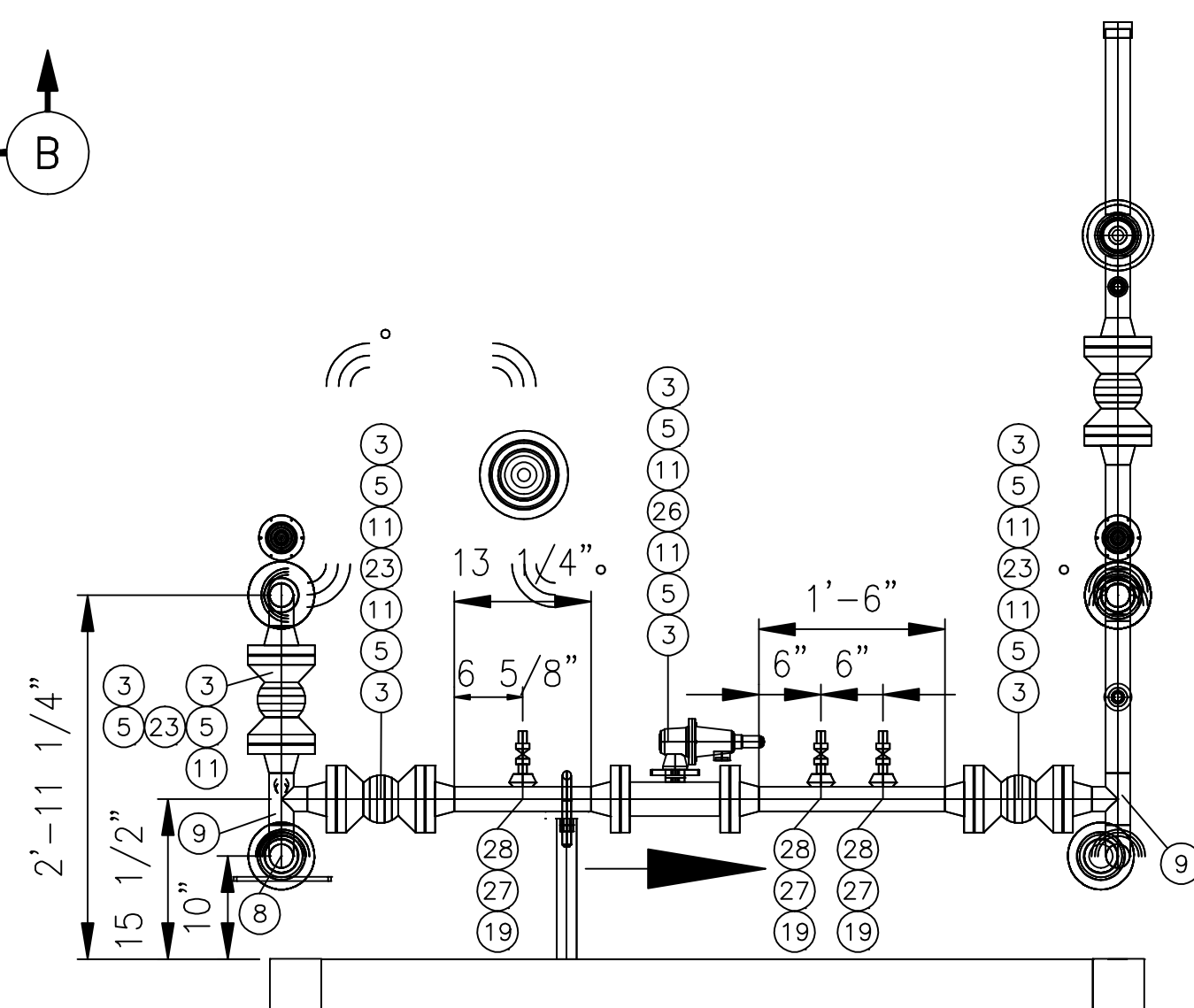
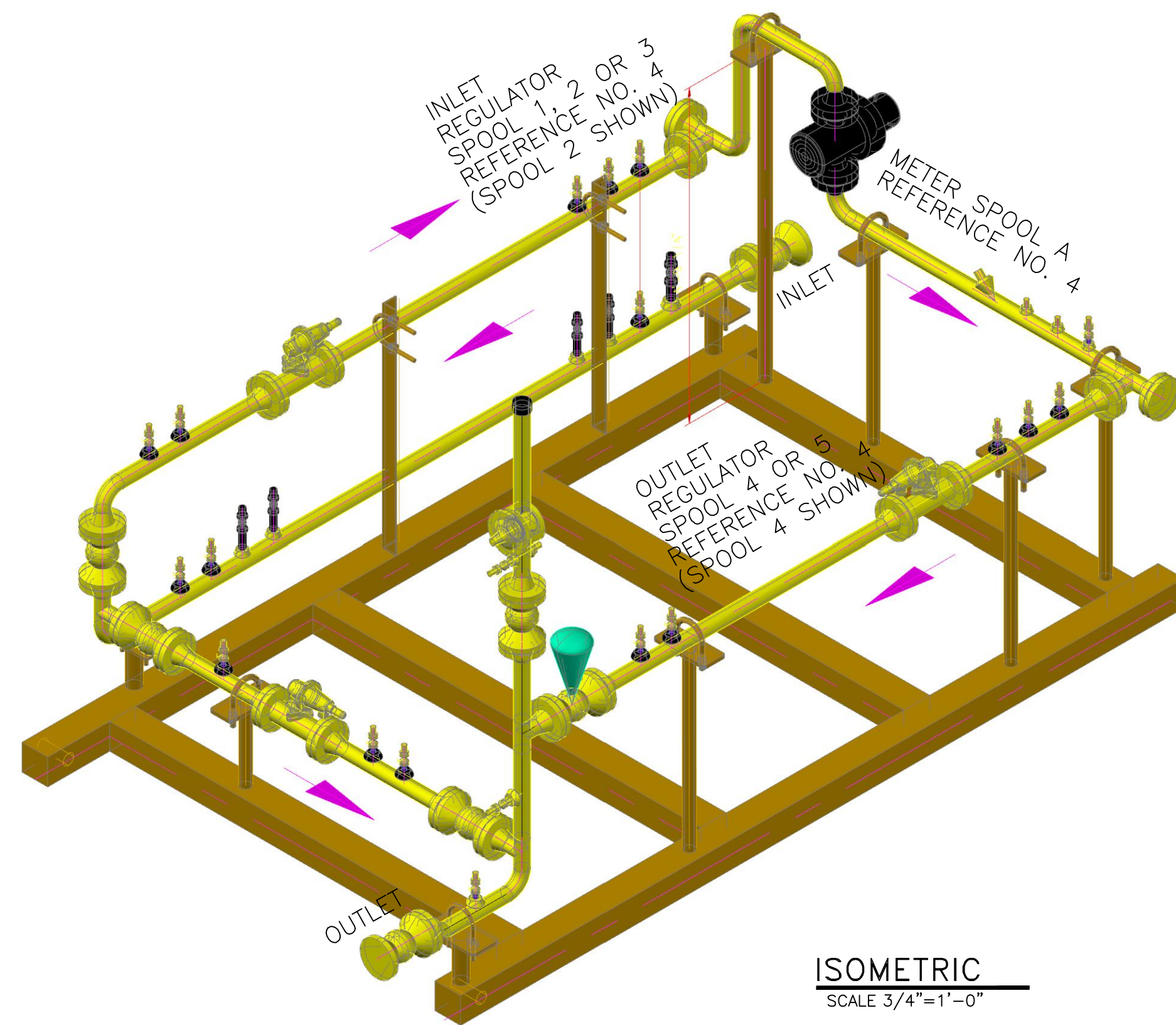


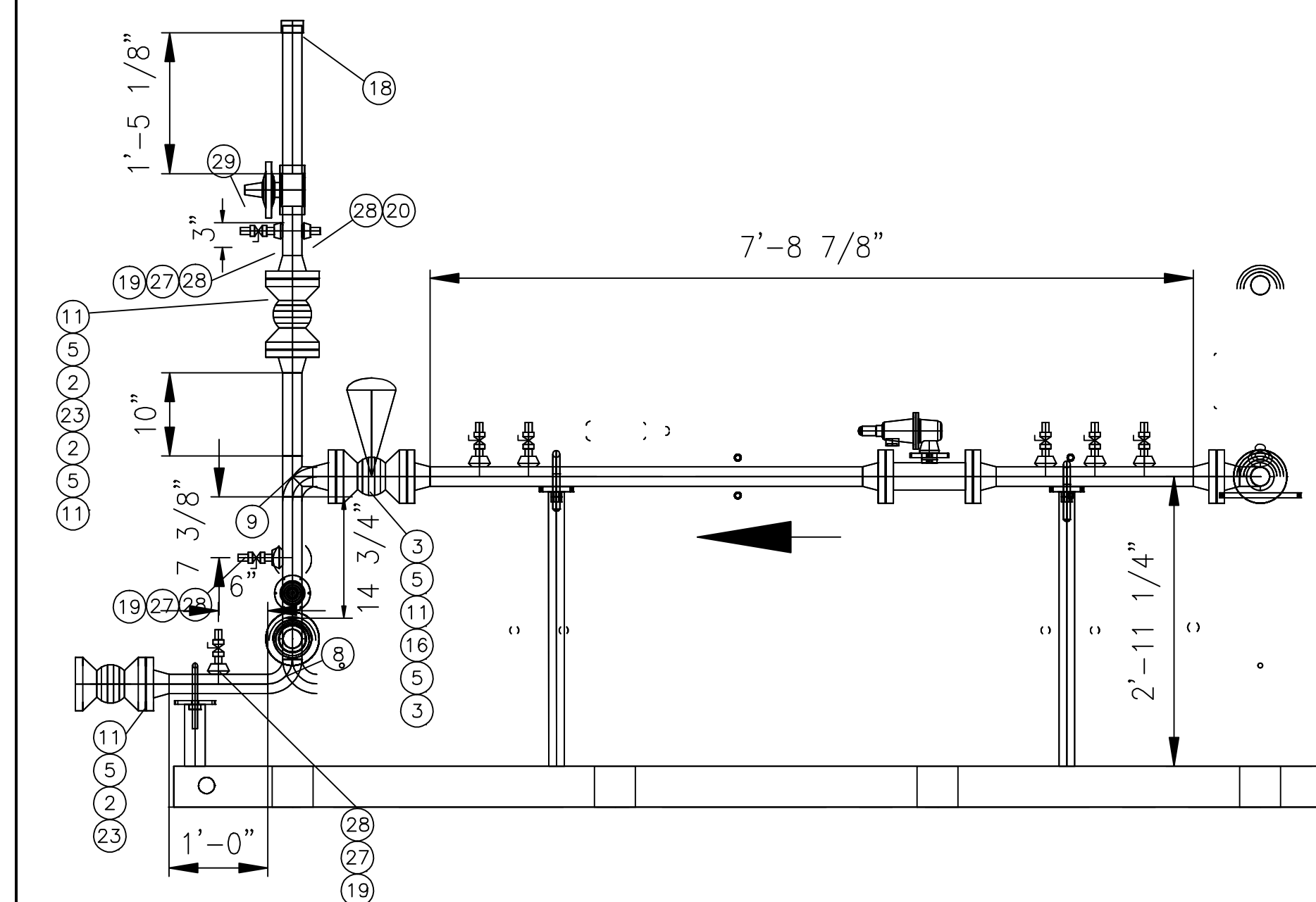
PLAN  
SCALE 3/4" = 1"



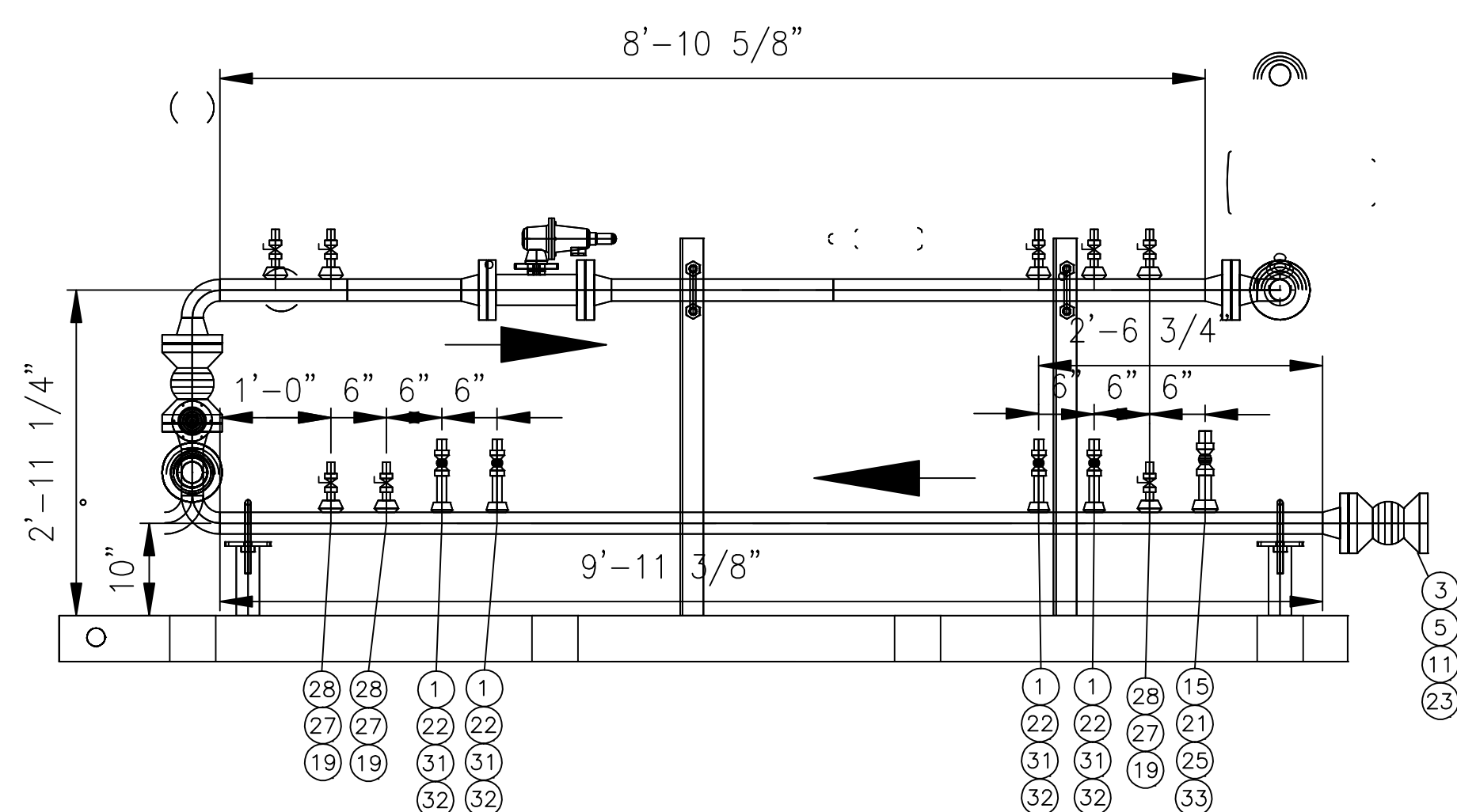
SECTION D  
SCALE 3/4" = 1"



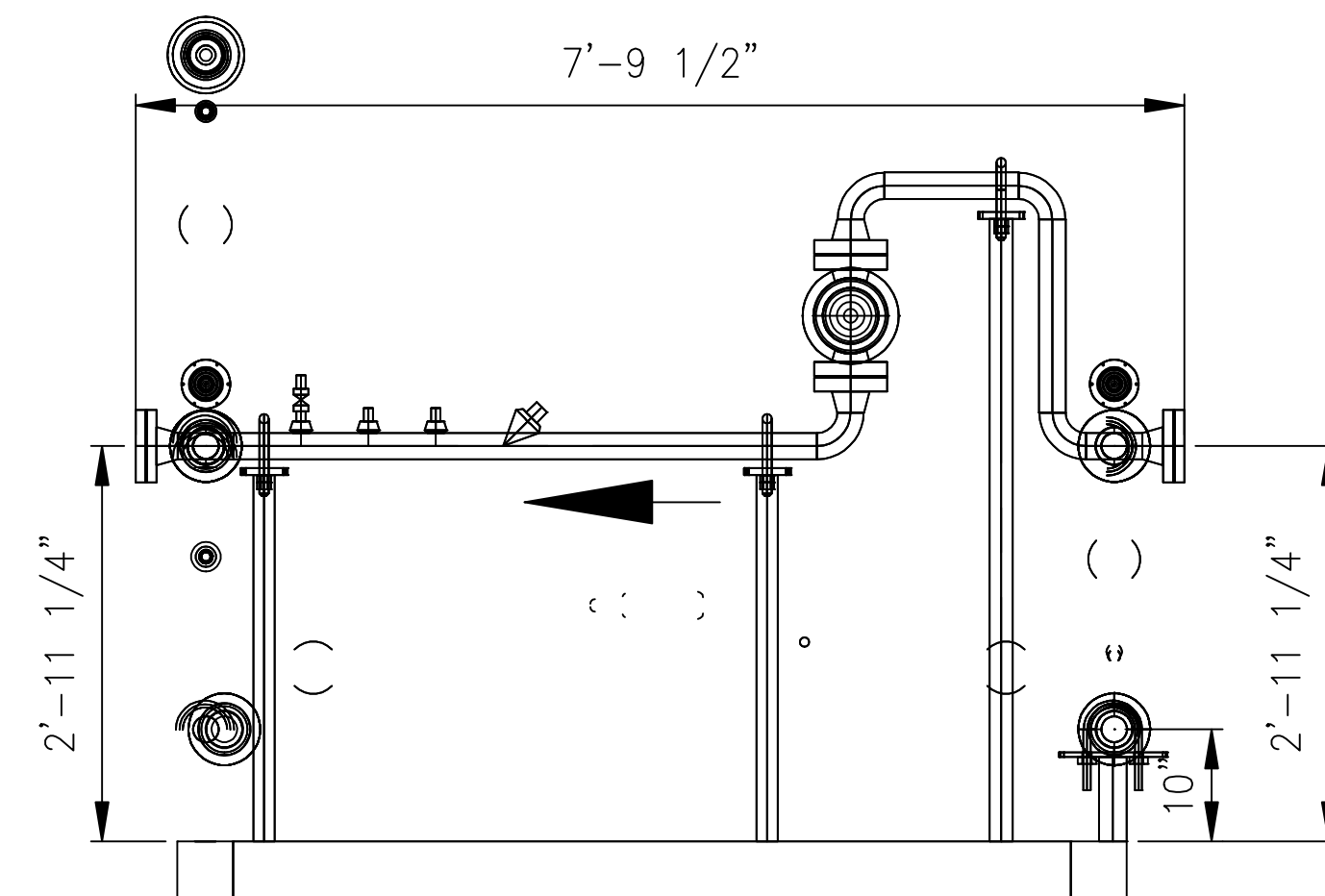
ISOMETRIC  
SCALE 3/4" = 1'-0"



SECTION A  
SCALE 3/4" = 1"



SECTION B  
SCALE 3/4" = 1"



SECTION C  
SCALE 3/4" = 1"

LIST OF MATERIAL		
ITEM	QTY	DESCRIPTION
1	4	THREDOLET, 2 X 3/4", 3000#, FS, ASTM A-105
2		NOT USED
3	11	(8) BOLTS, STUD, 5/8" X 3-3/4", ALLOY STEEL, ASTM A-193 GR. B7 C/W TWO ASTM A-194 TYPE 2H HVY HEX NUTS, FOR 2", 300# ANSI RF FLG
4		NOT USED
5	14	GASKET, 2", 300# ANSI, NON-ASBESTOS, SPIRAL WOUND, FLEXITALLIC CG OR EQUAL
6		NOT USED
7		NOT USED
8	2	ELL, 90 DEG, BW, 2", 3000#, ASTM A-105
9	3	TEE, BW, 2", 3000#, ASTM A-105
10		NOT USED
11	12	FLANGE, 2", 300# ANSI, RF, WN, ASTM A-105
12		NOT USED
13		NOT USED
14		NOT USED
15	1	THREDOLET, 2 X 1", 3000#, FS, ASTM A-105
16	1	VALVE, BALL, 2", 300 LB, RF, FLG, WRENCH OPERATED, STD PORT, API 6D, W/ ACTUATOR
17		NOT USED
18	1	CAP, WEATHER, 2", RUBBER
19	9	PLUG, 1/4", HEX HD, FS, ASTM A-105
20	1	PLUG, 1/2", HEX HD, FS, ASTM A-105
21	1	NIPPLE, 1" X 4" LG, SCH 80, SMLS, ASTM A-106, GR B, TBE
22	4	NIPPLE, 3/4" X 4" LG, SCH 80, SMLS, ASTM A-106, GR B, TBE
23	5	VALVE, BALL, 2", 300 LB, RF, FLG, WRENCH OPERATED, STD PORT, API 6D
24		NOT USED
25	1	VALVE, BALL, 1", CARBON STEEL, THREADED, 3000#
26	1	2" REGULATOR-300# ANSI-R.F.-FISHER EZR OR 627, GROVE 900 TE, OR MOONEY
27	9	VALVE, NEEDLE, 1/2" MNPT X 1/4 FNPT, THD, 3000#, AGCO
28	10	THREDOLET, 2 X 1/2", 3000#, FS, ASTM A-105
29	1	VALVE, RELIEF, 2", RELIEF VALVE
30		NOT USED
31	4	VALVE, BALL, 3/4", CARBON STEEL, THREADED, 3000#
32	4	PLUG, 3/4", HEX HD, FS, ASTM A-105
33	1	PLUG, 1", HEX HD, FS, ASTM A-105

NOTES:

- BUTT WELDS ARE TO BE 100% X-RAYED.
- TEST INLET AND OUTLET PIPING TO 1080 PSIG TEST PRESSURE FOR A MINIMUM OF 4 HOURS AFTER STABILIZATION.
- THE ENTIRE STATION IS TO BE PRIMED OR PAINTED AT THE SHOP.
- DO NOT SUBJECT POSITIVE METER & REGULATORS TO TEST PRESSURE.
- ALL OPENINGS TO BE CLOSED DURING TRANSIT AND STORAGE.
- VALVE SHOULD BE PLACED IN THE 1/2 OPEN POSITION DURING TEST.
- PLACE BASE MATERIAL & CONCRETE PARKING LOT CURB OR CONCRETE SLAB UNDER SKID.
- UNIT TO BE SET & SUPPORTED IN SUCH A MANNER AS TO INSURE THAT METER & REGULATORS ARE LEVEL.
- ALL VALVES ARE TO BE MOUNTED WITH STEMS HORIZONTAL & FACING OUTWARD (INSTALL LOCKING DEVICES ON ALL BY-PASS VALVES AND RELIEF VALVE, IF POSSIBLE)

**NOT FOR CONSTRUCTION**  
-DRAWINGS PROVIDED BY ATMOS ENERGY ARE CONCEPTUAL ONLY AND NOT TO BE USED FOR FINAL CONSTRUCTION

METER SELECTION	3M					5M					7M					11M					T18						
	MCFH		MCFH		MCFH		MCFH		MCFH		MCFH		MCFH		MCFH		MCFH		MCFH		MCFH		MCFH		MCFH		
700	Maximum	146.3	243.8	341.4	536.4	981	480	Maximum	101.2	168.7	236.2	371.2	654.6	260	Maximum	56.2	93.7	131.1	206.0	350.8							
	Minimum	1.9	2.0	5.1	4.3	8.9		Minimum	1.3	1.4	3.5	7.24			Minimum	0.7	0.8	2.0	1.7	5.3							
800	Maximum	125.8	209.7	293.6	461.3	830	415	Maximum	87.9	146.6	205.2	322.4	562.3	235	Maximum	51.1	85.1	119.2	187.3	317.55							
	Minimum	1.7	1.7	4.4	3.7	8.1		Minimum	1.2	1.2	3.1	6.72			Minimum	0.7	0.7	1.8	1.5	5.05							
500	Maximum	105.3	175.6	245.8	386.2	683	350	Maximum	74.6	124.4	174.1	273.6	472.5	200	Maximum	43.9	73.2	102.4	161.0	271							
	Minimum	1.4	1.5	3.7	3.1	7.4		Minimum	1.0	1.0	2.6	6.15			Minimum	0.6	0.6	1.5	1.3	4.7							
400	Maximum	84.9	141.4	198.0	311.2	541	250	Maximum	54.1	90.2	126.3	198.5	337.5														
	Minimum	1.1	1.2	3.0	2.5	6.6		Minimum	0.7	0.8	1.9	5.2															
300	Maximum	64.4	107.3	150.2	236.1	404																					
	Minimum	0.8	0.9	2.2	1.9	5.7																					
200	Maximum	43.9	73.2	102.4	161.0	271																					
	Minimum	0.6	0.6	1.5	1.3	4.7																					

NOTE:  
INLET & OUTLETS ARE TO BE ROUTED IN FIELD. MATCH TO EXISTING INSTALLATION.

NOTE:  
PROPOSED AND EXISTING PIPELINES, ALONG WITH ALL UNDERGROUND OBSTRUCTIONS TO BE STAKED PRIOR TO CONSTRUCTION.

NOTE:  
EXISTING AND PROPOSED PIPELINES TO BE STAKED 20' ON CENTERS 100' BOTH SIDES OF CONFLICT POINT PRIOR TO CONSTRUCTION. FOREIGN PIPELINES TO BE STAKED 20' ON CENTERS WITHIN OUR PIPELINE EASEMENT.

- REFERENCE DWG.
- LOT LAYOUT(50' x 50')
  - PID
  - 2" M.S. SKID DETAILS
  - 2" M.S. REG./METER SPOOLS

PD11985, SHEET 3  
PD11985, SHEET 1  
REFERENCE  
PD11985, SHEET 5

MARK	PIPE SPECIFICATIONS			DESIGN DATA								TESTING REQUIREMENTS			COATING SPECIFICATIONS	FIELD JOINT COATING	LONG SEAM TYPE	FIELD JOINT TYPE
	O.D. INCHES	WALL THICKNESS INCHES	PIPE GRADE	ACTUAL CLASS	DESIGN CLASS	DESIGN FACTOR	P.S.I.G. @ 100' S.M.Y.S.	EXISTING PSIG	DESIGN P.S.I.G.	INTERNAL HDQ. SIZE INCHES	TEST P.S.I.G.	TEST DUR. HOURS	X-RAY #					
A	2.375	.154	X42	3	3	.5	5447	720	720	13.2	1080	4	100	PAINTED	PAINTED	SMLS	WELDED	

REV	DESCRIPTION	BY	DATE	PROJ. ENGR.:	DATE:
B	REV TO SUIT PM COMMENTS.	RAM	12/09/08	DAVID SHUNG	12/09/08
A	PRELIM...NOT FOR CONSTRUCTION	RAM	10/29/08	RICK MARSH	
REV				PROJECT No. -	DSWR No. -
				SHT. No. SH 4 OF 5	DRAWING No. PD11985



PROPOSED 3RD PARTY METER AND REGULATOR STATION PLAN, SECTIONS & DETAILS